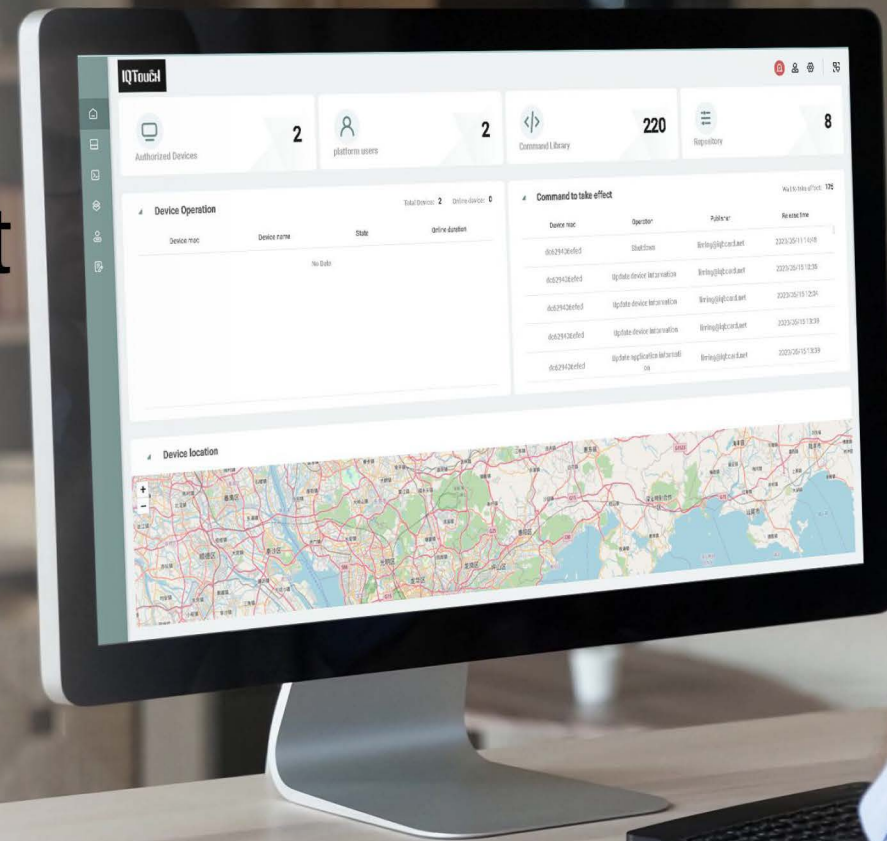




# IQ RDM

## Remote Device Management for IQTouch

Efficiently manage all your IQTouch displays in one place



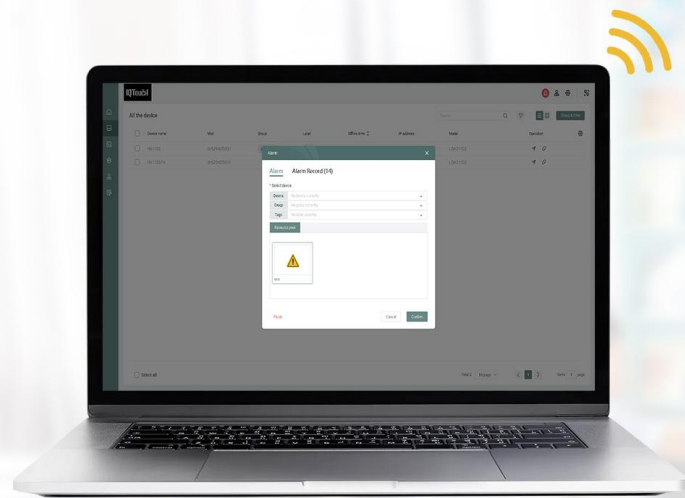
# Remote Device Control

As a mobile device management software, IQ RDM allows you to have instant access and control over a single or a selected group of your IQTouch displays: turn on/off screens remotely, take screen control, lock screens when necessary, set up unified wallpaper for your organization and so on.



# Alerts and File Transferring

Send alerts and various files to all or individual screens for public notification. You can create and manage content on the platform and send it to screens with just a few clicks.



Room 1



Room 2



Room 3



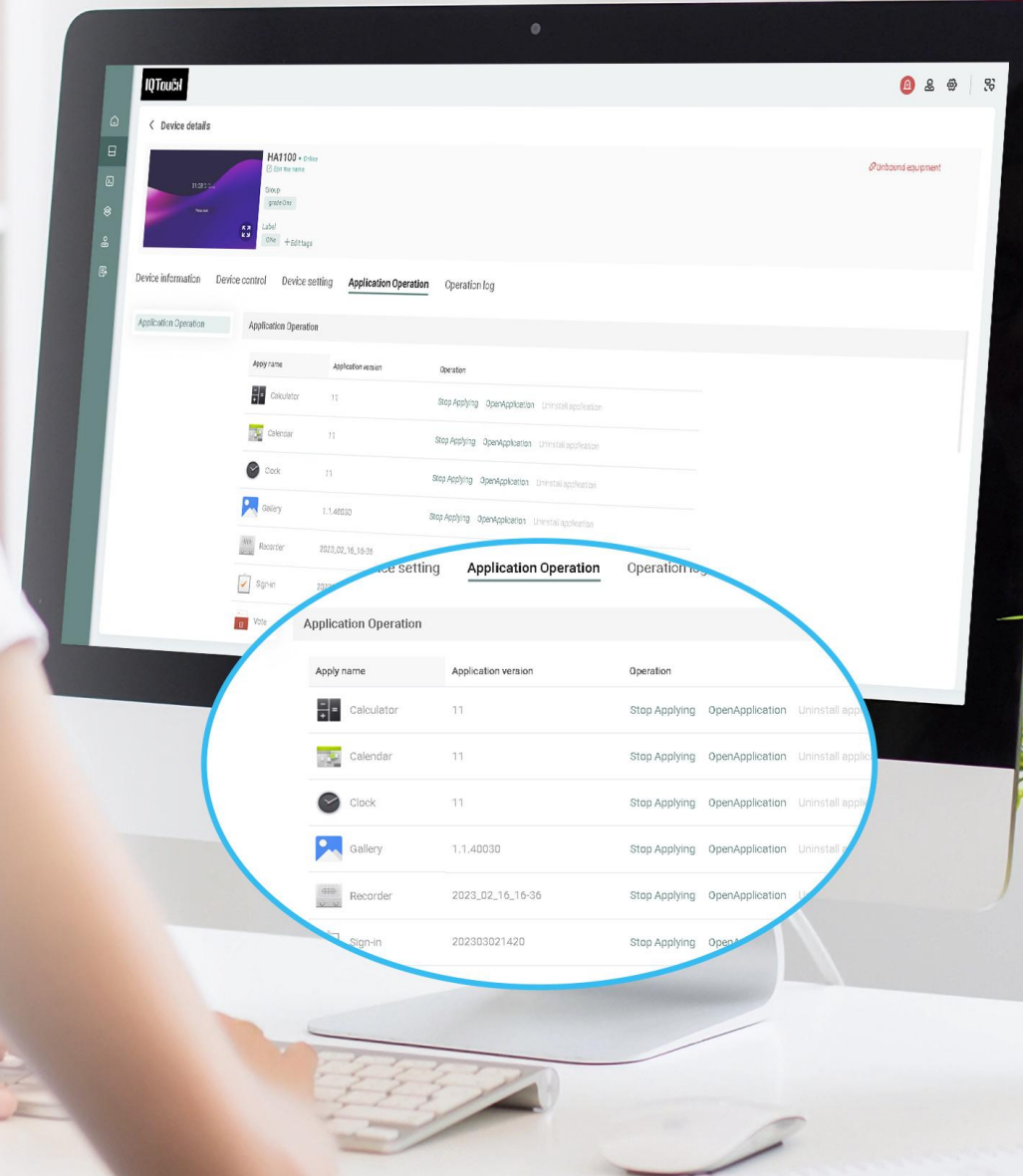
Room 4



.....

# App Management

Manage all your applications efficiently in each IQTouch display. You can distribute updates, install new apps or remove unwanted ones from the device fleet at once. Allow users to have access to only approved apps and block unauthorized ones from them.





🕒 08:00



## Scheduled Tasks

Set time to turn on and off IQTouch automatically every day for energy consumption. It also helps streamline the daily operation of IT team in your organization and boost efficiency.

🕒 17:00



# Device Info Analysis

IT managers can have a clear view of device status for all IQTouch displays within the organization. The dashboard provides daily usage report and operation data for the management team to further optimize the workflow and increase productivity.

The screenshot displays the IQTouch dashboard interface. At the top, there are four main sections: 'Authorized Devices' with a count of 2, 'platform users' with a count of 2, 'Command Library' with a count of 220, and 'Repository' with a count of 8. Below these are two tables: 'Device Operation' and 'Command to take effect'. The 'Device Operation' table is currently empty with the text 'No data'. The 'Command to take effect' table lists several commands with their respective publishers and release times. Below the dashboard is a 'Device details' view for a device named 'HA1100'. This view includes a profile picture, a group name 'group One', and a label 'ONE'. It also features a map showing the device's location. The 'Basic information' section is expanded, showing fields for Serial number, Device resolution, Bind time, Device name, Bind account, and Login time.

Device mac	Device name	State	Online duration
No data			

Device mac	Operation	Publisher	Release time
0629426efed	Shutdown	liming@iqboard.net	2023/05/11 14:48
0629426efed	Update device information	liming@iqboard.net	2023/05/15 10:35
0629426efed	Update device information	liming@iqboard.net	2023/05/15 12:04
0629426efed	Update device information	liming@iqboard.net	2023/05/15 13:39
0629426efed	Update device information	liming@iqboard.net	2023/05/15 13:39

**Device details**

HA1100 online

Group: group One

Label: ONE edit tags

unbound equipment

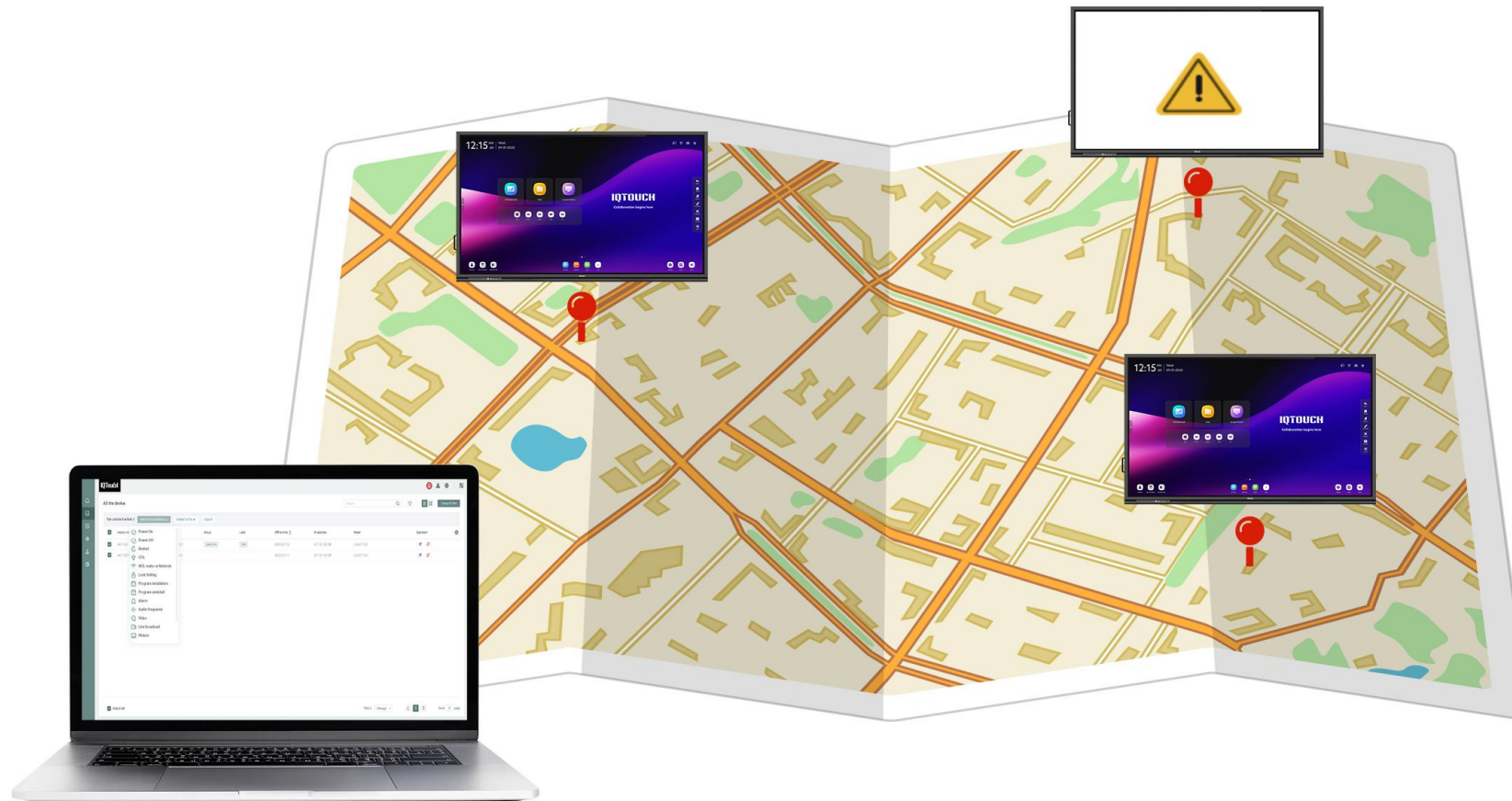
Device information | Device control | Device setting | Application Operation | Operation log

Basic information

Serial number	Device name
39402160	HA1100
Device resolution	Bind account
1920x1080	liming@iqboard.net
Bind time	Login time
2023-06-02	2023-07-13

# Secure and Track Devices

Monitor all roaming displays and track their real-time locations for device security. For unauthorized use of the display, you can lock the screen or disable applications to prevent data leakage.



# OTA Update






Get the latest firmware and keep your IQTouch up-to-date in just one click. You can see the current version and do the firmware upgrade instantly or on schedule to make sure the display is always at its peak performance.





# THANKS

IQ Authorized Dealer

-  IQ Board Australia
-  6 Lakewood Blvd, Carrum Downs Victoria, 3201 AUSTRALIA
-  1300 472 627 (1300 IQBOARD)
-  [www.iqboard.com.au](http://www.iqboard.com.au)
-  [enquiries@iqboard.com.au](mailto:enquiries@iqboard.com.au)